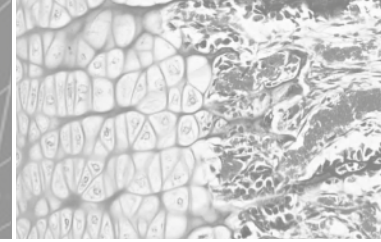
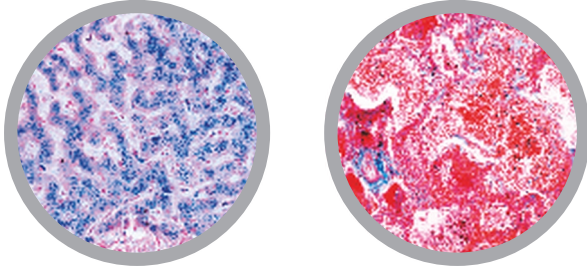


# HISTOLOGY & PATHOLOGY



## Human Pathology Basic Slide Set 50 slides



### Abnormal alterations of cells and tissues

- 1 - Parenchymatous and fatty degeneration of liver
- 2 - Hemosiderosis of liver
- 3 - Glycogenosis of liver
- 4 - Pigmentary cirrhosis of liver
- 5 - Necrotic esophagitis
- 6 - Foreign body granuloma with hemosiderin and giant cells
- 7 - Tonsillitis
- 8 - Liver cirrhosis

### Injury of circulatory organs and blood-forming organs

- 9 - Adiposis of heart
- 10 - Cardiac callosity
- 11 - Myocarditis chronica acuta recidivans
- 12 - Organized venous thrombosis of muscle
- 13 - Infarct of spleen
- 14 - Chronic myeloid leukaemia of spleen
- 15 - Malarial melanemia of spleen

### Pathologic alterations of lung and liver, tuberculosis, pneumonia

- 16 - Anthracosis of lung
- 17 - Hemorrhagic infarct of lung
- 18 - Influenzal pneumonia
- 19 - Croupous pneumonia
- 20 - Chronic pneumonia
- 21 - Necrotic (cheesy) pneumonia
- 22 - Miliary tuberculosis of lung
- 23 - Chronic tuberculous pulmonary cavity with bacteria
- 24 - Icterus hepatis

### Reaction of kidney after arteriosclerosis, disturbance of metabolism, and inflammation; colitis

- 25 - Glomerular atrophy of kidney
- 26 - Amyloid degeneration of kidney
- 27 - Acute hemorrhagic nephritis
- 28 - Chronic glomerulonephritis
- 29 - Septic embolic nephritis
- 30 - Colitis dysenterica Shiga-Kruse

### Specific inflammations after infection with syphilis spirochaetes

- 31 - Congenital syphilis of liver, spirochaetes silvered after Levaditi
- 32 - Congenital syphilis of liver (feverstein liver), routine stained
- 33 - Gumma of testicle

### Progressive alteration of injured tissues and organs (Hypertrophy and hyperplasia)

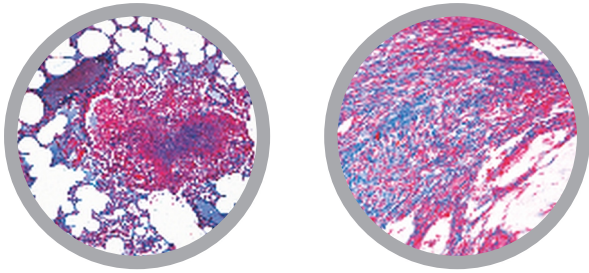
- 34 - Atheroma of head
- 35 - Goitre of thyroid gland (Struma colloidis)
- 36 - Undescended testicle showing hyperplasia of Leydig's cells
- 37 - Hypertrophy of prostate
- 38 - Giant cell sarcoma of maxilla

### Benignant and malignant tumours

- 39 - Chondroma of pubic bone
- 40 - Myoma of uterus
- 41 - Fibroadenoma of breast
- 42 - Fibroepithelial mixed tumour of parotid gland
- 43 - Melanosarcoma of skin
- 44 - Spindle cell sarcoma
- 45 - Carcinoma cervicis uteri
- 46 - Sarcoma of testicle
- 47 - Cystadenoma papilliferum of ovary
- 48 - Gelatinous carcinoma of rectum
- 49 - Lymphosarcoma mediastini
- 50 - Metastatic carcinoma of liver

Cat #: JL-4HPM - \$ 538.09 (Ex.GST)

**Human Pathology Set, Part 1**  
40 slides

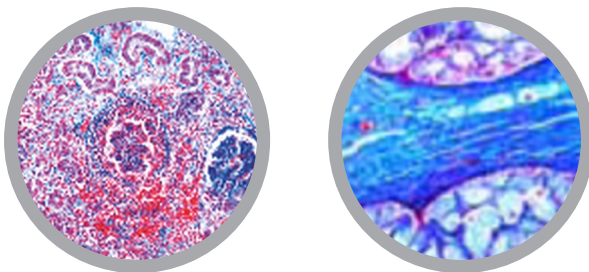


- 1 - Miliary tuberculosis of lung
- 2 - Anthracosis of lung
- 3 - Croupous pneumonia
- 4 - Cyanotic induration of lung
- 5 - Chronic pneumonia
- 6 - Chronic pulmonary emphysema
- 7 - Necrotic (cheesy) pneumonia
- 8 - Influenzal pneumonia
- 9 - Myeloid sarcoma of spleen
- 10 - Malaria melanemia of spleen
- 11 - Myocarditis chronica acuta recidivans
- 12 - Amyloid degeneration of spleen
- 13 - Adiposis of heart
- 14 - Cardiac callosity
- 15 - Cor villosum
- 16 - Lymphosarcoma mediastini

- 17 - Myxoma mandibulae
- 18 - Erysipelas of spleen
- 19 - Tuberculosis of lymph glands
- 20 - Scirrhus carcinoma of thyroid gland
- 21 - Fibroepithelial mixed tumour of parotid gland
- 22 - Carcinoma medullare glandulae
- 23 - Goitre of thyroid gland (Struma colloides)
- 24 - Miliary tuberculosis of liver
- 25 - Parenchymatous and fatty degeneration of liver
- 26 - Pigmentary cirrhosis of liver
- 27 - Hemosiderosis of liver
- 28 - Adenocarcinoma of colon
- 29 - Colitis dysenterica Shiga-Kruse
- 30 - Cirrhosis hepatis luetica
- 31 - Carcinoma of liver, primary
- 32 - Cyanotic atrophy of liver (nutmeg liver)
- 33 - Hemorrhagic necrosis of liver (eclampsia)
- 34 - Amyloid degeneration of liver
- 35 - Brown atrophy of liver
- 36 - Lymphatic leukaemia of liver
- 37 - Icterus hepatis
- 38 - Parenchymatous degeneration of liver
- 39 - Cavernous hemangioma of liver
- 40 - Congenital syphilis of liver (feuerstein liver)

Cat #: JL-5HPM - \$ 456.89 (Ex.GST)

**Human Pathology Set, Part 2**  
41 slides

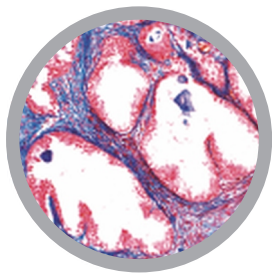


- 1 - Liver metastasis from a melanosarcoma rectis
- 2 - Malignant tumour of gall bladder
- 3 - Myoma of uterus
- 4 - Cardiac kidney
- 5 - Chronic glomerulonephritis
- 6 - Amyloid degeneration of kidney
- 7 - Carcinoma cervicis uteri
- 8 - Septic embolic nephritis
- 9 - Cystadenoma papilliferum of ovary
- 10 - Papilloma of uterine fundus
- 11 - Tuberculosis of kidney
- 12 - Undescended testicle with hyperplasia of Leydig's cells
- 13 - Parenchymatous degeneration of kidney
- 14 - Acute nephritis
- 15 - Acute hemorrhagic nephritis
- 16 - Glycogenosis of kidney
- 17 - Glomerular atrophy of kidney

- 18 - Adenoma of ovary
- 19 - Hypernephroma of kidney
- 20 - Malignant ovarian tumour
- 21 - Sarcoma of testicle
- 22 - Ovarian cysts
- 23 - Hypertrophy of the prostate
- 24 - Fibromyoma uteri
- 25 - Glioma cerebri
- 26 - Organized venous thrombosis of muscle
- 27 - Fibroadenoma of breast
- 28 - Spindle cell sarcoma
- 29 - Scirrhus carcinoma of breast
- 30 - Chondroma of pubic bone
- 31 - Giant cell sarcoma of maxilla
- 32 - Fibroadenoma intracanalicular of mamma
- 33 - Melanosarcoma of skin
- 34 - Sarcoma of thigh
- 35 - Fibroma of skin
- 36 - Myxofibroma of abdominal wall
- 37 - Zenker's degeneration of M. rectus abdominis (influenza)
- 38 - Cicatricial tissue
- 39 - Carcinoma solidum simplex of breast
- 40 - Fat embolism after fracture of the leg
- 41 - Abscessus lumbalis

Cat #: JL-6HPM - \$ 456.89 (Ex.GST)

**Human Pathology Supplementary Set**  
41 slides

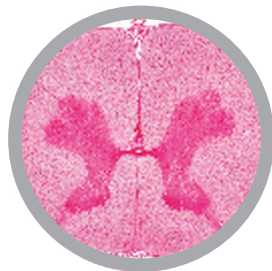
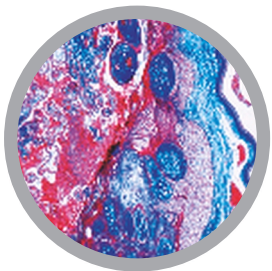


- 1 - Tuberculosis of lung
- 2 - Tuberculous coal lung
- 3 - Carcinoma of lung
- 4 - Carcinoma of large intestine
- 5 - Carcinoma of stomach
- 6 - Carcinoma of squamous epithelium, skin
- 7 - Carcinoma of mammary gland
- 8 - Nephritis, sec. of kidney
- 9 - Adenoma of adrenal gland
- 10 - Arteriosclerosis
- 11 - Meningitis
- 12 - Leukaemia, blood smear
- 13 - Anaemia, blood smear
- 14 - Adrenal adenoma
- 15 - Struma nodosa of thyroid gland
- 16 - Inflammation of appendix
- 17 - Tonsillitis, sec. of palatine tonsil
- 18 - Ovary, cyst
- 19 - Ovary, teratoma, sec.

- 20 - Uterus, myom, sec.
- 21 - Tuberculosis, liver, sec.
- 22 - Liver, fatty degeneration, sec.
- 23 - Liver, carcinoma, sec.
- 24 - Peritoneal metastasis of hepatoma, sec.
- 25 - Syphilis of kidney
- 26 - Cirrhosis of kidney
- 27 - Tuberculosis of kidney
- 28 - Icterus (jaundice), sec. of kidney
- 29 - Bleeding of kidney
- 30 - Pneumonia, sec. of lung
- 31 - Papilloma of urinary bladder
- 32 - Diphtheria, sec. of trachea
- 33 - Hypertrophy of prostate
- 34 - Thickening of intestine
- 35 - Bleeding of intestine caused by sublimate
- 36 - Fibroadenoma of mammary gland
- 37 - Icterus (jaundice) of testis
- 38 - Atrophy of testis
- 39 - Inhibition of spermatogenesis, testis (caused by hormone disorder)
- 40 - Carcinoma of praeputium
- 41 - Inflammation of gall bladder

Cat #: JL-17HPM - \$ 464.82 (Ex.GST)

**Normal Human Histology Slide Set**  
40 slides

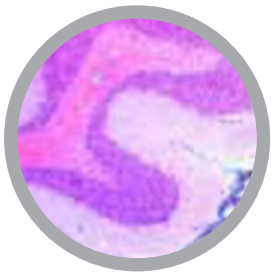
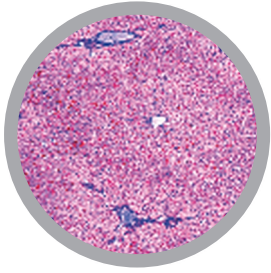
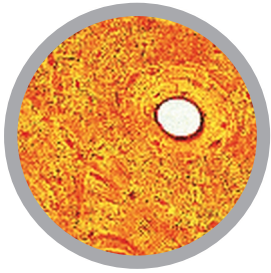


- 1 - Squamous epithelium, human, isolated cells
- 2 - Areolar connective tissue, human w.m.
- 3 - Hyaline cartilage, human t.s.
- 4 - Compact bone, human t.s.
- 5 - Striated muscle, human l.s.
- 6 - Heart muscle, human l.s. and t.s.
- 7 - Artery, human t.s.
- 8 - Vein, human t.s.
- 9 - Lung, human t.s.
- 10 - Blood smear, human
- 11 - Spleen, human t.s.
- 12 - Thyroid gland, human t.s.
- 13 - Thymus gland from human child t.s.
- 14 - Tongue, human t.s.
- 15 - Tooth, human l.s.
- 16 - Parotid, human gland t.s.
- 17 - Oesophagus, human t.s.
- 18 - Stomach, human, fundic region t.s.

- 19 - Duodenum, human t.s. (small intestine)
- 20 - Colon, human t.s. (large intestine)
- 21 - Pancreas, human t.s.
- 22 - Liver, human t.s.
- 23 - Vermiform appendix, human t.s.
- 24 - Kidney, human t.s.
- 25 - Adrenal (suprarenal) gland, human t.s.
- 26 - Ovary, human t.s.
- 27 - Uterus, human t.s.
- 28 - Placenta, human t.s.
- 29 - Testis, human t.s.
- 30 - Epididymis, human t.s.
- 31 - Cerebrum, human t.s.
- 32 - Cerebellum, human t.s.
- 33 - Spinal cord, human t.s.
- 34 - Sympathetic ganglion, human t.s.
- 35 - Skin of palm, human t.s.
- 36 - Scalp, human, l.s. of hair follicles
- 37 - Scalp, human, t.s. of hair follicles
- 38 - Retina, human t.s.
- 39 - Finger tip from foetus with nail development l.s.
- 40 - Mammary gland, human t.s.

Cat #: JL-1HPM - \$ 520.38 (Ex.GST)

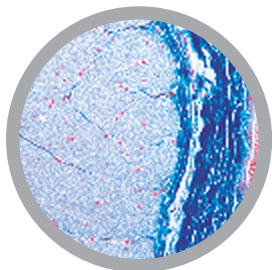
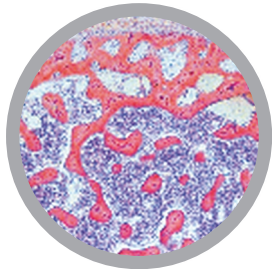
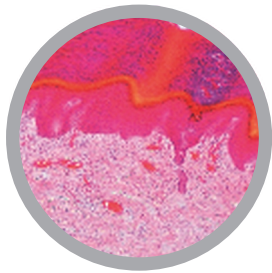
**Human Histology Set, Part 1**  
**50 slides**



- 1 - Isolated squamous epithelium, human
- 2 - Connective tissue, human, sec.
- 3 - Columnar epithelium, human gall bladder, t.s.
- 4 - Ciliated epithelium, human trachea, t.s.
- 5 - Smooth muscles, human, l.s. and t.s.
- 6 - Striated muscles, human, l.s.
- 7 - Heart muscles, human, l.s. and t.s.
- 8 - Hyaline cartilage, human, sec.
- 9 - Elastic cartilage of epiglottis, human, t.s.
- 10 - Bone, compact substance, human, t.s.
- 11 - White fibrous tissue (tendon), human, l.s.
- 12 - Red bone marrow, human, t.s.
- 13 - Scalp, human, l.s. of hair follicles
- 14 - Artery, human, t.s.
- 15 - Vein, human, t.s.
- 16 - Blood smear, human, Giemsa stain
- 17 - Lung, human, t.s.
- 18 - Larynx of human foetus, t.s.
- 19 - Lymph gland, human, t.s.
- 20 - Thyroid gland, human, t.s.
- 21 - Pituitary gland, human, t.s.
- 22 - Spleen, human, t.s.
- 23 - Tongue, human, t.s.
- 24 - Oesophagus, human, t.s.
- 25 - Sublingual gland, human, t.s.
- 26 - Stomach, pyloric region, human, t.s.
- 27 - Pancreas, human, t.s.
- 28 - Small intestine, human, t.s.
- 29 - Large intestine, human, t.s.
- 30 - Liver, human, t.s.
- 31 - Kidney, human, t.s.
- 32 - Adrenal gland, human, t.s.
- 33 - Ureter, human, t.s.
- 34 - Urinary bladder, human, t.s.
- 35 - Ovary, human, t.s.
- 36 - Uterus, human, t.s.
- 37 - Uterine tube, human, t.s.
- 38 - Placenta, human, t.s.
- 39 - Umbilical cord, human, t.s.
- 40 - Mammary gland, human, sec.
- 41 - Testis, human, t.s.
- 42 - Epididymis, human, t.s.
- 43 - Olfactory epithelium, human, t.s.
- 44 - Retina, human, t.s.
- 45 - Internal ear, human foetal, t.s.
- 46 - Touch corpuscles in human skin, t.s.
- 47 - Nerve, human, l.s.
- 48 - Spinal cord, human, t.s.
- 49 - Cerebellum, human, t.s.
- 50 - Cerebrum, cortex, human, t.s.

Cat #: JL-2HPM - \$ 555.18 (Ex.GST)

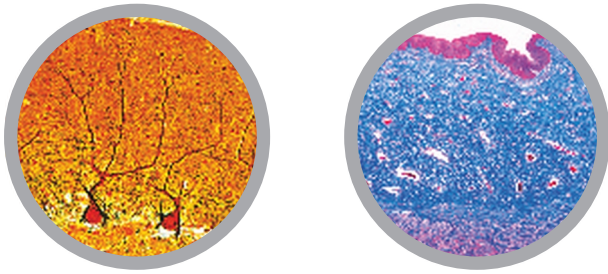
**Human Histology Set, Part 2**  
**50 slides**



- 1 - Soft palate, human t.s.
- 2 - Adipose tissue, human, sec. stained for fat
- 3 - White fibrous cartilage, human intervertebral disc, sec.
- 4 - Striated (skeletal) muscle, human t.s.
- 5 - Spongy (cancellous) bone, human t.s.
- 6 - Bone development (intermembranous), vertical l.s. of foetal skull-cap (cranial bone)
- 7 - Bone development (intracartilaginous), l.s. of foetal finger
- 8 - Joint of human foetus, l.s.
- 9 - Tooth, human, t.s. of crown
- 10 - Tooth, human, complete l.s.
- 11 - Tooth development from human foetus, medium stage l.s.
- 12 - Aorta, human, t.s. routine stained
- 13 - Trachea from human foetus t.s.
- 14 - Thymus from human child, t.s.
- 15 - Parathyroid gland (Gl. parathyreoidea), human t.s.
- 16 - Tonsil (Tonsilla palatina), human t.s.
- 17 - Parotid gland (Gl. parotis), human t.s.
- 18 - Submaxillary gland (Gl. submandibularis), human t.s.
- 19 - Stomach, fundic region, human t.s.
- 20 - Stomach, cardiac region, human t.s.
- 21 - Jejunum, human t.s.
- 22 - Small intestine (Duodenum) t.s. colouring of goblet cells, PAS-HE
- 23 - Vermiform appendix, human t.s.
- 24 - Rectum, human t.s.
- 25 - Gall bladder, human t.s.
- 26 - Liver of human foetus sec., developing blood cells
- 27 - Urethra, human, t.s.
- 28 - Seminal vesicle (Gl. vesiculosa), human t.s.
- 29 - Spermatic cord (Ductus deferens), human t.s.
- 30 - Prostate, human, t.s.
- 31 - Sperm smear, human
- 32 - Corpus luteum in t.s. of human ovary
- 33 - Vagina, human t.s.
- 34 - Cerebral cortex, human, t.s. silvered (Golgi or Palmgren)
- 35 - Cerebral cortex, human, t.s. stained for neuroglial cells after Held
- 36 - Cerebellum, human, t.s. silvered (Golgi or Palmgren)
- 37 - Thalamus, human, stained after Klüver - Barrera
- 38 - Medulla oblongata, human, t.s. routine stained
- 39 - Spinal cord, human, t.s. silvered (Golgi or Palmgren)
- 40 - Sympathetic ganglion, human t.s. routine stained
- 41 - Peripheral nerve, human t.s.
- 42 - Optic nerve, human t.s.
- 43 - Cornea from eye, human t.s.
- 44 - Eyelid, human, t.s.
- 45 - Skin from finger tip, human, vertical l.s.
- 46 - Scalp, human, horizontal l.s. shows t.s. of hair follicles
- 47 - Nail development, sagittal l.s. finger tip of human foetus
- 48 - Human chromosomes in smear from culture of blood, male
- 49 - Human chromosomes in smear from culture of blood, female
- 50 - Barr bodies (human sex chromatin) in smear from female squamous epithelium \*

Cat #: JL-3HPM - \$ 609.32 (Ex.GST)

**Human Histology Complete Slide Set**  
**103 slides\*\***



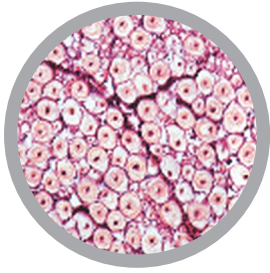
Mostly stained in clear Hematoxyline - Eosine (HE)

- 1 - Squamous epithelium, isolated cells from human mouth, smear
- 2 - Stratified, non-cornified squamous epithelium, section of oesophagus
- 3 - Simple columnar epithelium, in sec. of secreting tubules of human kidney
- 4 - Simple ciliated columnar epithelium, in t.s. of oviduct
- 5 - Simple cuboidal epithelium, in sec. of human thyroid gland
- 6 - Transitional epithelium, in sec. of human bladder
- 7 - Glandular epithelium, in sec. of human colon with unicellular mucous glands
- 8 - Areolar connective tissue, human w.m.
- 9 - Embryonic connective tissue from human foetus, sec.
- 10 - Adipose tissue, human, sec. fat removed to show the cells
- 11 - Hyaline cartilage, human t.s.
- 12 - Yellow elastic cartilage, human, sec. stained for elastic fibres
- 13 - White fibrous cartilage, human sec.
- 14 - Compact bone, human t.s.
- 15 - Compact bone, human l.s.
- 16 - Bone development (intracartilaginous), l.s. of foetal finger
- 17 - Bone development (intermembranous), vertical l.s. of foetal skull-cap (cranial bone)
- 18 - Striated (skeletal) muscle, human l.s.
- 19 - Striated (skeletal) muscle, human t.s.
- 20 - Smooth (involuntary) muscle, human l.s. and t.s.
- 21 - Heart (cardiac) muscle, human l.s. and t.s.
- 22 - Artery, human, t.s. stained for elastic fibres
- 23 - Vein, human, t.s. stained for elastic fibres
- 24 - Aorta, human, t.s. routine stained
- 25 - Blood smear, human, Wright's stain
- 26 - Trachea, human t.s.
- 27 - Trachea, human l.s.
- 28 - Trachea from human fetus t.s.
- 29 - Lung, human, sec. routine stained
- 30 - Lung from human foetus, sec.
- 31 - Lymphnode, human t.s.
- 32 - Tonsil (Tonsilla palatina), human t.s.
- 33 - Spleen, human t.s.
- 34 - Bone marrow, human t.s.
- 35 - Thymus from human child, t.s.
- 36 - Thyroid gland (Gl. thyroidea), human t.s.
- 37 - Adrenal gland (Gl. suprarenalis), human t.s.
- 38 - Pituitary gland (Hypophysis), human t.s.
- 39 - Pineal body (Epiphysis), human t.s.
- 40 - Lip, human vertical l.s.
- 41 - Tooth, human, t.s. of crown
- 42 - Tooth, human, l.s. of entire specimen
- 43 - Tooth development from human foetus, medium stage l.s.
- 44 - Tongue, human, sec. with filiform papillae
- 45 - Tongue, human, sec. with fungiform papillae
- 46 - Soft palate, human t.s.
- 47 - Oesophagus, human t.s.
- 48 - Stomach, fundic region, human t.s.
- 49 - Duodenum, human t.s.
- 50 - Jejunum, human t.s.
- 51 - Ileum, human t.s.
- 52 - Vermiform appendix, human t.s.
- 53 - Colon, human t.s.
- 54 - Parotid gland (Gl. parotis), human t.s.
- 55 - Submaxillary gland (Gl. submandibularis), human t.s.
- 56 - Pancreas, human t.s.
- 57 - Liver, human t.s.
- 58 - Gall bladder, human t.s.
- 59 - Kidney, human t.s.
- 60 - Renal papilla, human t.s.
- 61 - Kidney from human foetus, t.s.
- 62 - Ureter, human t.s.
- 63 - Urinary bladder, human t.s.
- 64 - Urethra, prostatic part, human t.s.
- 65 - Ovary, mature, human t.s.
- 66 - Ovary with Corpus luteum, human t.s.
- 67 - Oviduct (fallopian tube), t.s. in region of ampulla
- 68 - Uterus, human, proliferative stage t.s.
- 69 - Uterus, human, pregnant (gravid), t.s.
- 70 - Placenta, human t.s.
- 71 - Umbilical cord (navel string), human t.s.
- 72 - Vagina, human t.s.
- 73 - Testis from human child, t.s.
- 74 - Testis from human adult, mature stage t.s.
- 75 - Epididymis, human t.s.
- 76 - Sperm smear, human
- 77 - Spermatic cord (Ductus deferens), human t.s.
- 78 - Seminal vesicle (Gl. vesiculosa), human t.s.
- 79 - Prostate of young man, t.s.
- 80 - Penis from human foetus, t.s.
- 81 - Cerebral cortex, human, t.s. routine stained
- 82 - Cerebellum, human, t.s. routine stained
- 83 - Cerebellum from human foetus, t.s. routine stained
- 84 - Cerebrum and cerebellum composite slide, human, t.s. routine stained
- 85 - Medulla oblongata, human, t.s. routine stained
- 86 - Medulla oblongata from human foetus, t.s.
- 87 - Spinal cord, human t.s. of cervical region
- 88 - Spinal cord, human t.s. of thoracic region
- 89 - Spinal cord, human t.s. of lumbar region
- 90 - Spinal cord, human l.s. routine stained
- 91 - Spinal ganglion, human t.s.
- 92 - Peripheral nerve, human t.s.
- 93 - Peripheral nerve, human l.s.
- 94 - Optic nerve, human t.s.
- 95 - Retina from eye, t.s.
- 96 - Olfactory epithelium, human t.s.
- 97 - Skin from palm, human, vertical l.s.
- 98 - Body skin, white, vertical l.s.
- 99 - Scalp, vertical l.s. shows l.s. of hair follicles, human
- 100 - Scalp, horizontal l.s. shows t.s. of hair follicles, human
- 101 - Scalp of human foetus, vertical l.s. shows l.s. of hairs
- 102 - Finger tip of human foetus, sagittal l.s. showing nail development
- 103 - Mammary gland, active, human t.s.

\*\* Depending on availability this set can occasionally only have 100 slides in the set. It is also possible that some of the slides may be different to the ones advertised. If this occurs suitable replacements are offered. If this is an issue please check with us before ordering.

Cat #: JL-16HPM - \$1,161.96 (Ex.GST)

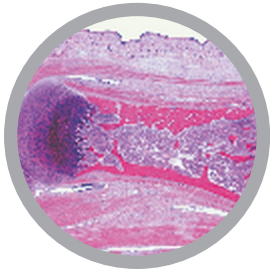
**Nervous System Slide Set**  
**6 slides**



- 1 - Cerebrum, human, cortex, t.s.
- 2 - Cerebellum, human, t.s.
- 3 - Cerebellum, human, t.s., Weigert stained
- 4 - Spinal cord, human, t.s. for general structure
- 5 - Nerve, human, l.s.
- 6 - Nerve, human, t.s.

Cat #: JL-15HPM - \$ 103.65 (Ex. GST)

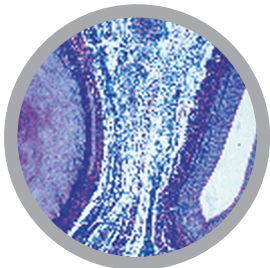
**Human Tissue Slide Set**  
**14 slides**



- 1 - Squamous epithelium, scrapings from human mouth, w.m.
- 2 - Columnar epithelium, human gall bladder, t.s.
- 3 - Ciliated epithelium, human trachea, t.s.
- 4 - Skin, human, from general body surface showing sweat glands
- 5 - Human scalp, longitudinal section of hair
- 6 - Developing of nail, human embryo, l.s.
- 7 - Hyaline cartilage, human, t.s.
- 8- Developing cartilaginous bone, joint of human foetus, l.s.
- 9 - Compact bone, c.s. and l.s.
- 10 - Striated muscle, human, l.s., staining of striations
- 11 - Striated muscle, human, t.s.
- 12 - Smooth muscle, human, t.s. and l.s.
- 13 - White fibrous tissue, human tendon, l.s.
- 14 - Adipose tissue, human, t.s.

Cat #: JL-8HPM - \$ 172.09 (Ex.GST)

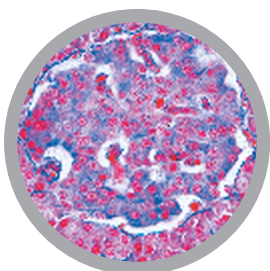
**Respiratory & Circulatory System Slide Set**  
**9 slides**



- 1 - Lung, human t.s. showing alveoli, blood vessels and pleura
- 2 - Blood, human, Giemsa or Wright stained smear
- 3 - Artery, human, t.s., elastica stained
- 4 - Vein, human, t.s., elastica stained
- 5 - Artery and vein, human, t.s., elastica stained
- 6 - Aorta, human, t.s.
- 7 - Heart muscle, human t.s. and l.s., striations, intercalated discs
- 8 - Lymph gland, human, t.s.
- 9 - Red bone marrow, human rib, t.s. Giemsa stained

Cat #: JL-9HPM - \$ 130.78 (Ex.GST)

**Digestive System Slide Set**  
**8 slides**



- 1 - Lip, human foetus, t.s.
- 2 - Tooth, developing, human foetus, l.s.
- 3 - Sublingual gland, human, t.s.
- 4 - Stomach, human, pyloric region, t.s.
- 5 - Appendix, human, t.s.
- 6 - Colon (large intestine), human, t.s.
- 7 - Pancreas, human, t.s. with islets of Langerhans
- 8 - Liver, human, t.s.

Cat #: JL-10HPM - \$ 137.33 (Ex.GST)